

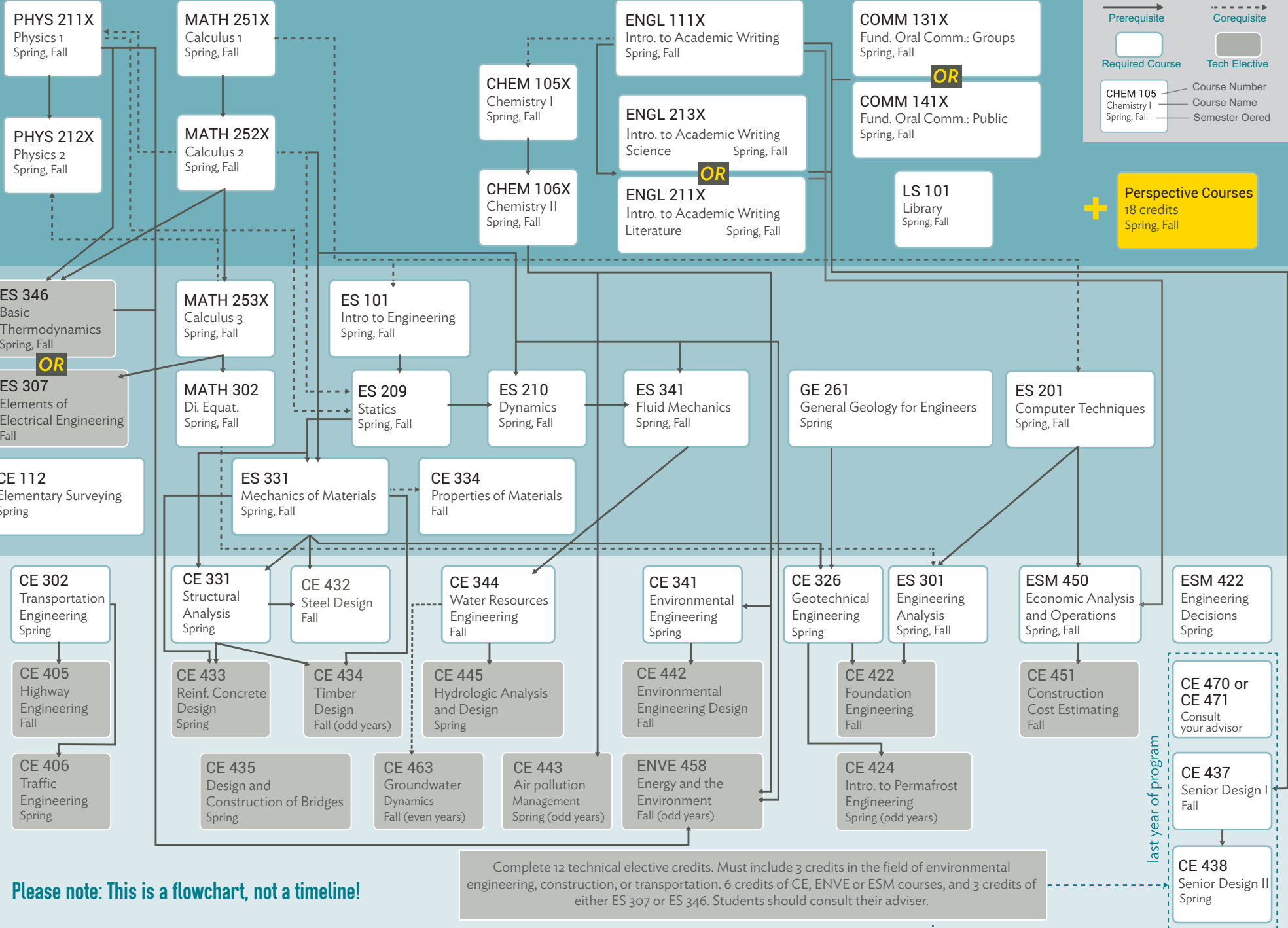
College of Engineering and Mines

Civil and Environmental Engineering
2018-2019 Bachelor of Science

University core

Engineering Basics

Analysis + Design



Please note: This is a flowchart, not a timeline!

Complete 12 technical elective credits. Must include 3 credits in the field of environmental engineering, construction, or transportation. 6 credits of CE, ENVE or ESM courses, and 3 credits of either ES 307 or ES 346. Students should consult their adviser.

Traffic/Highway

Structural

Water Resources

Environmental

Geotechnical

Construction Management

General